

The logo features a stylized building icon on the left, composed of vertical bars of varying heights and horizontal crossbars, resembling a grid or a modern architectural structure. To the right of this icon, the word "IMARAT" is written in large, bold, uppercase letters, and "BUILDERS MALL" is written in smaller, bold, uppercase letters directly beneath it.

# IMARAT BUILDERS MALL

Floor Plans

The floor plan shows a complex layout of retail spaces. Shops are arranged in several rows and clusters. Key features include:

- Shops and Areas:** SHOP-1 (168 sft) to SHOP-43 (255 sft), including an Electrical Room, a Stair Opening to the ground floor, a Cargo Lift, and a Serv. Lift.
- Structural Elements:** Walls, columns, and beams are indicated throughout the plan.
- Openings:** Various openings are marked, including a large opening on the left side and a stair opening to the ground floor.

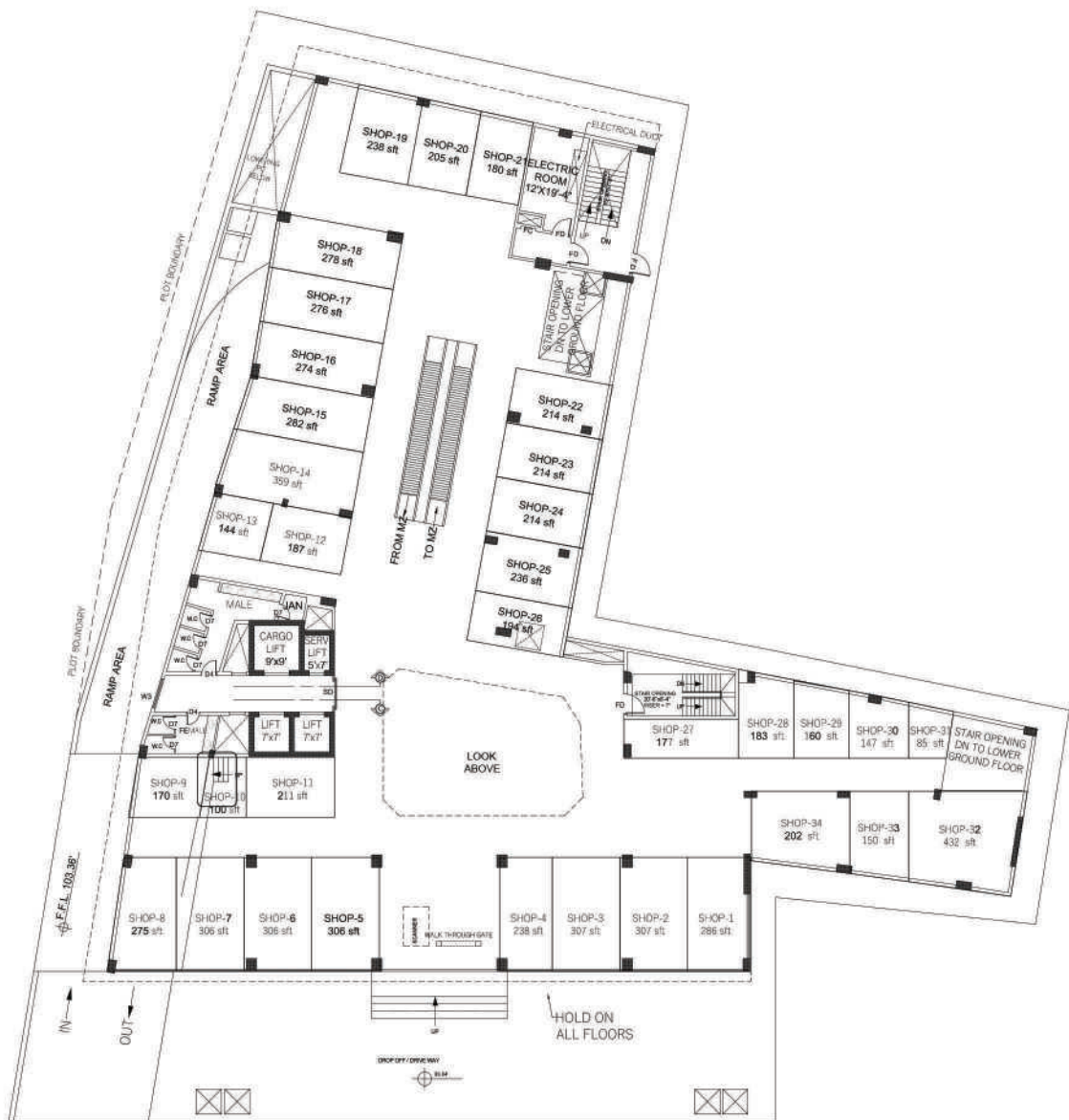


## Lower Ground



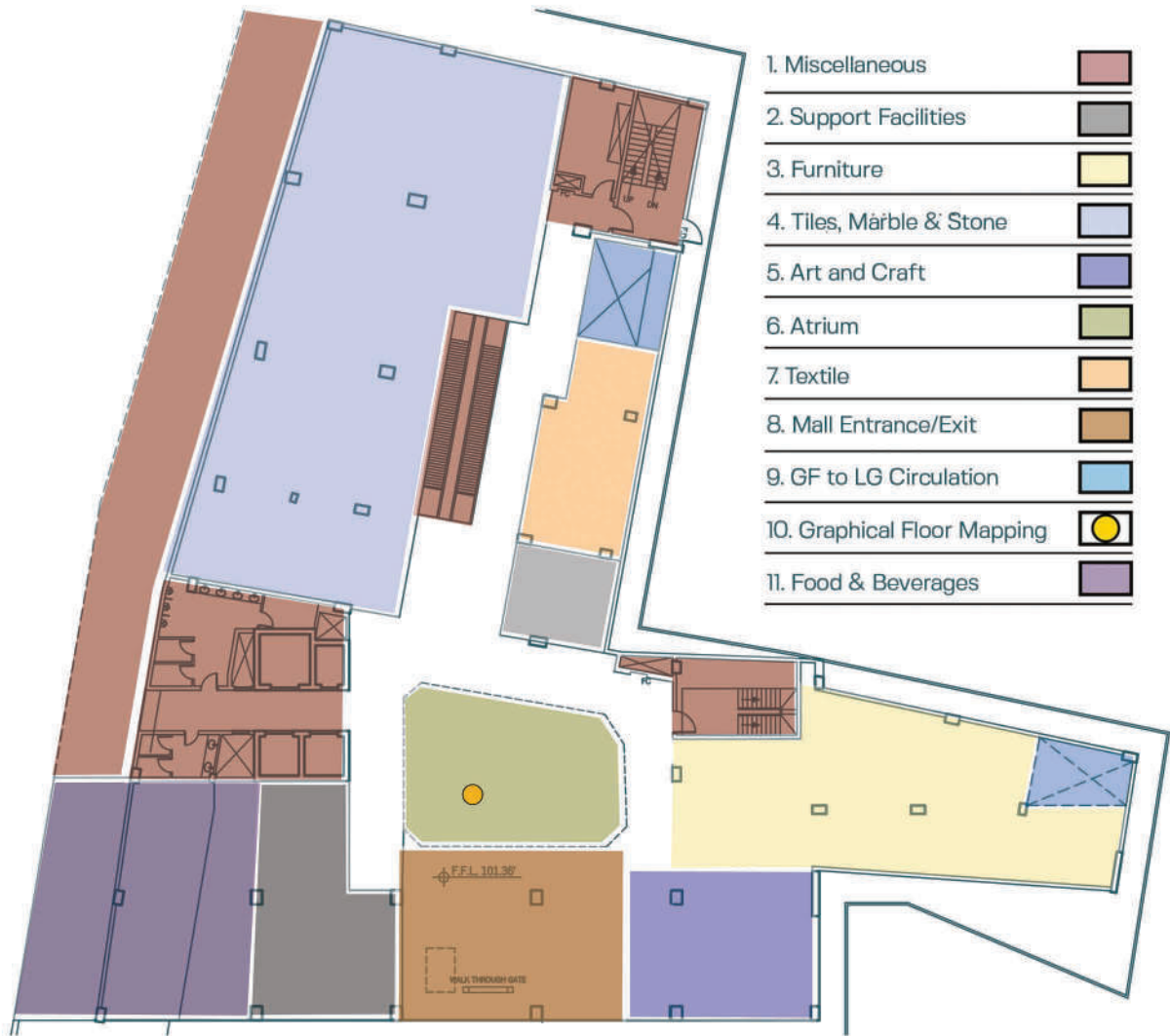
# Ground

## SALES PLAN





# Ground



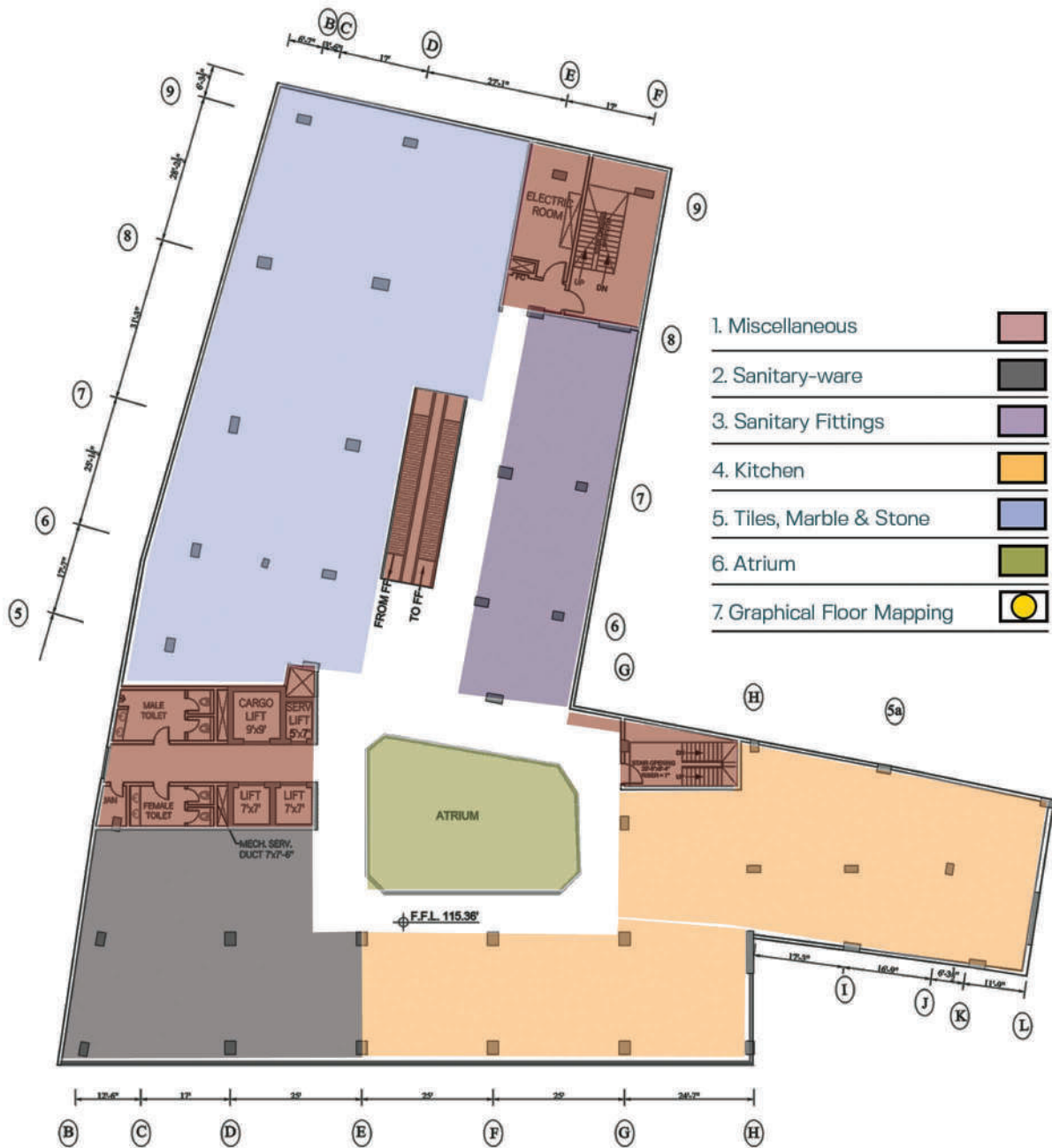
# Mezzanine

## SALES PLAN





# Mezzanine



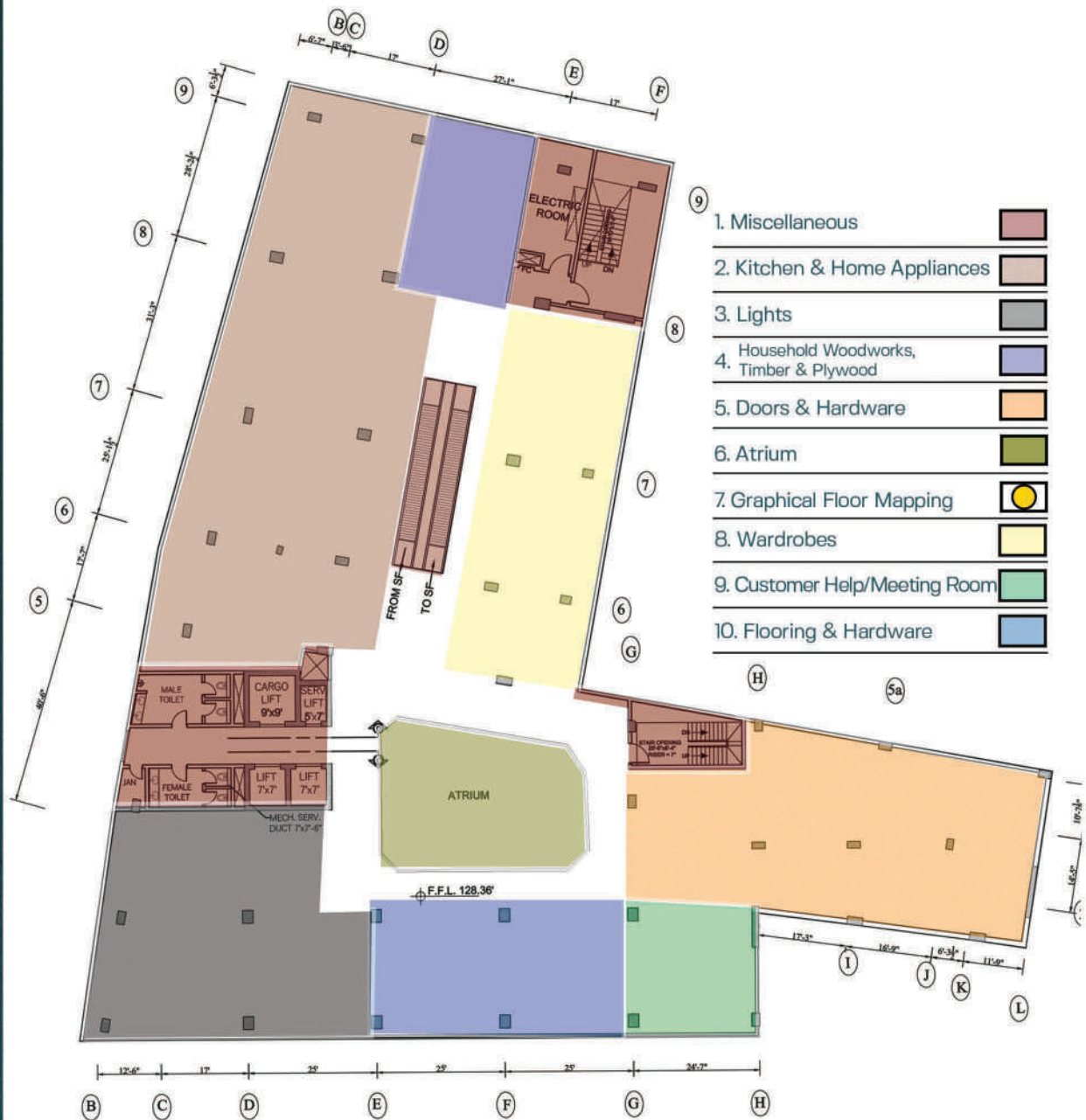
# First Floor

## SALES PLAN





# First Floor



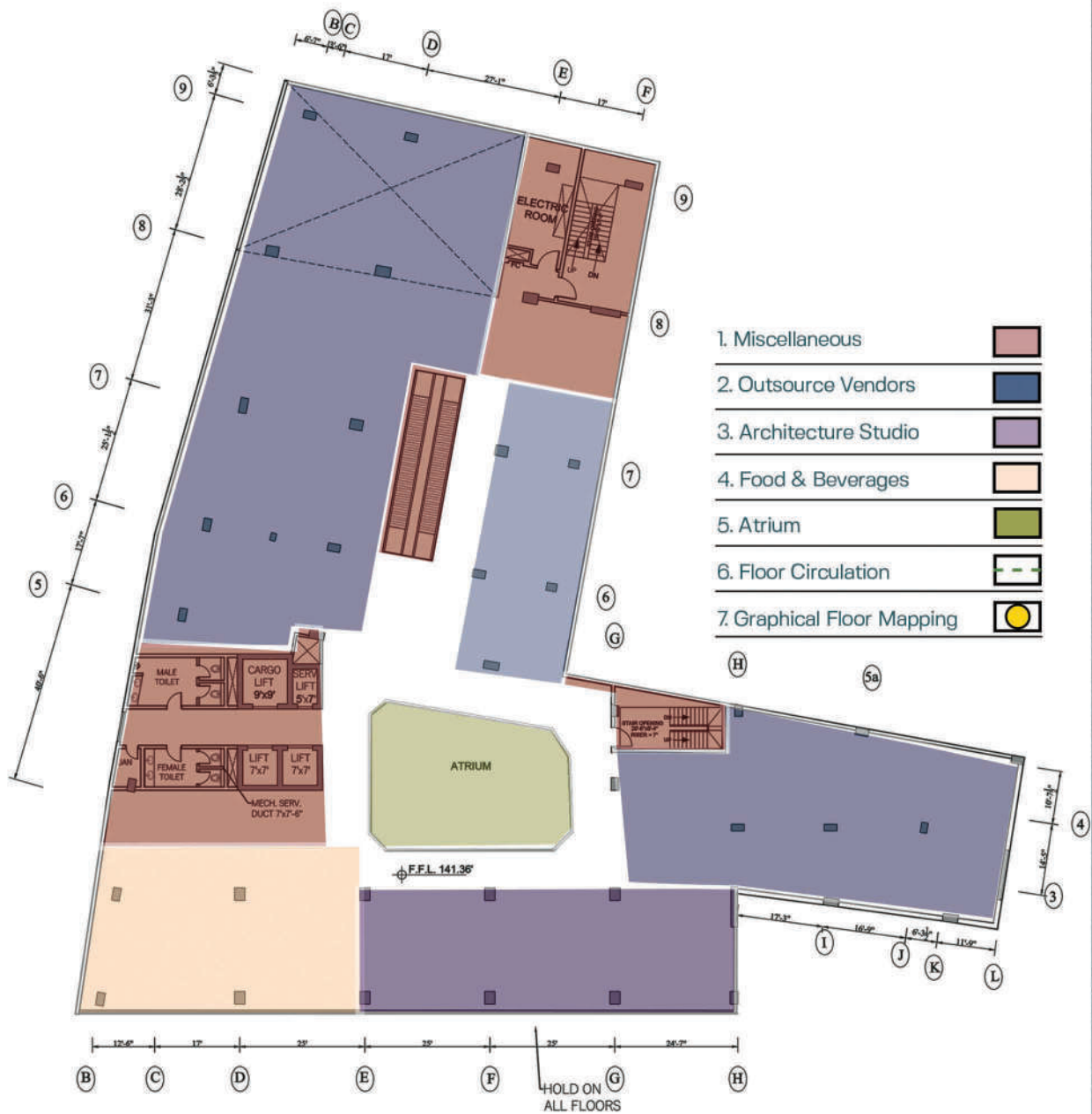
# Second Floor

## SALES PLAN





# Second Floor





## Our Offices

### Head Office

4<sup>th</sup> Floor, Beverly Centre,  
Blue Area,  
Islamabad.

051 111 555 555, 0348 2555 555

### London Office

614, Romford Road,  
London, E12-5AF,  
United Kingdom.

0044 208 477 7797

### Regional Office

Opposite Ayub Park,  
GT Road,  
Rawalpindi.

0348 2555 555

### Site Office

Near DHA-II,  
Gate-1, Main GT  
Road, Islamabad.

0348 2555 555

### Peshawar Office

2<sup>nd</sup> Floor, JB Towers,  
Block B, Main University  
Road, Peshawar.

0348 2555 555

### Lahore Office

76-B Gulberg III, 2<sup>nd</sup> Floor  
9 Arches Arcade,  
MM Alam Road, Lahore.

0348 2555 555